

HOLLAND HERRINGBONE 6CM

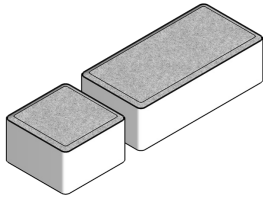
PRODUCT NUMBER # 207



- Smooth surfaces and classical chamfers define each stone to create texture and visual structure with timeless appeal
- Designed for mechanical installation
- Suitable for medium vehicular applications, such as residential streets and commercial parking lots, with proper pavement design and installation
- Joints and surfaces meet ADA gap and lippage requirements
- Made of durable concrete that won't decay, distort, or attract pests. Iron oxide pigments won't fade with extended UV exposure. Meets or exceeds applicable requirements of ASTM C936 and C1782

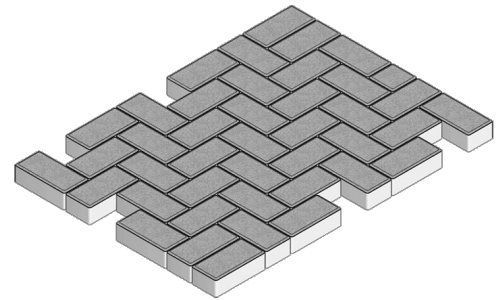
The Holland series offers the Old World charm of a simple shape where pavers can be installed in a variety of patterns to produce utilitarian or decorative pavement designs. Mixing these patterns with a combination of colors produces architectural effects limited only by the imagination. Holland is available in a range of paver heights to suit a variety of traffic conditions and base preparations, and in layer arrangements to facilitate mechanical installation.

STONE(S)



			Half	Full
Height	<i>in</i>	In.	2.36	2.36
	<i>mm</i>	MM.	60	60
Length	<i>in</i>	IN.	3.94	7.87
	<i>mm</i>	MM	100	200
Width	<i>in</i>	IN	3.94	3.94
	<i>mm</i>	MM	100	100
Units	<i>/pl</i>	QTY	10	410

PALLET LAYOUT



NOTES

Weights are approximate and do not include shipping pallet. Installation to applicable ICPI standards is required for warranty coverage. Made with natural materials, which vary in color, and Portland cement, which may effloresce - any implied warranty to the contrary is disclaimed.

PALLET SPECS

Pallet Weight	2492 lbs
Sq Ft/Pallet	89 sq.ft.



Distributed by:

www.aspent.com (800) 869-9600

www.pavestone.com

HOLLAND HERRINGBONE 8CM

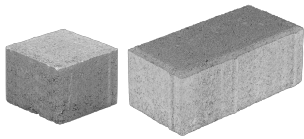
PRODUCT NUMBER # 209



- Smooth surfaces and classical chamfers define each stone to create texture and visual structure with timeless appeal
- Designed for mechanical installation
- Suitable for heavy vehicular applications, such as municipal streets and minor arterials, with proper pavement design and installation
- Joints and surfaces meet ADA gap and lippage requirements
- Made of durable concrete that won't decay, distort, or attract pests. Iron oxide pigments won't fade with extended UV exposure. Meets or exceeds applicable requirements of ASTM C936 and C1782

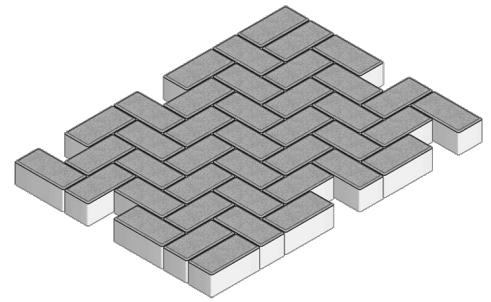
The Holland series offers the Old World charm of a simple shape where pavers can be installed in a variety of patterns to produce utilitarian or decorative pavement designs. Mixing these patterns with a combination of colors produces architectural effects limited only by the imagination. Holland is available in a range of paver heights to suit a variety of traffic conditions and base preparations, and in layer arrangements to facilitate mechanical installation.

STONE(S)



	4x8		
Height	<i>in</i>	In.	3.15
	<i>mm</i>	MM.	80
Length	<i>in</i>	IN.	7.87
	<i>mm</i>	MM	200
Width	<i>in</i>	IN	3.94
	<i>mm</i>	MM	100
Units	<i>/pl</i>	QTY	328

PALLET LAYOUT



NOTES

Weights are approximate and do not include shipping pallet. Installation to applicable ICPI standards is required for warranty coverage. Made with natural materials, which vary in color, and Portland cement, which may effloresce - any implied warranty to the contrary is disclaimed.

PALLET SPECS

Pallet Weight	2644 lbs
Sq Ft/Pallet	71 sq.ft.



Distributed by:

www.aspent.com (800) 869-9600

www.pavestone.com

HOLLAND HERRINGBONE 8CM

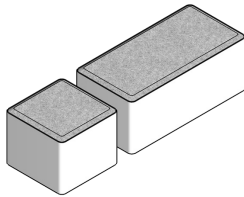
PRODUCT NUMBER # 212



- Smooth surfaces and classical chamfers define each stone to create texture and visual structure with timeless appeal
- Designed for mechanical installation
- Suitable for heavy vehicular applications, such as municipal streets and minor arterials, with proper pavement design and installation
- Joints and surfaces meet ADA gap and lippage requirements
- Made of durable concrete that won't decay, distort, or attract pests. Iron oxide pigments won't fade with extended UV exposure. Meets or exceeds applicable requirements of ASTM C936 and C1782

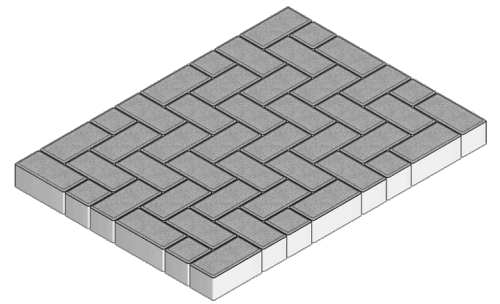
The Holland series offers the Old World charm of a simple shape where pavers can be installed in a variety of patterns to produce utilitarian or decorative pavement designs. Mixing these patterns with a combination of colors produces architectural effects limited only by the imagination. Holland is available in a range of paver heights to suit a variety of traffic conditions and base preparations, and in layer arrangements to facilitate mechanical installation.

STONE(S)



			Half	Full
Height	<i>in</i>	In.	3.15	3.15
	<i>mm</i>	MM.	80	80
Length	<i>in</i>	IN.	3.94	7.87
	<i>mm</i>	MM	100	200
Width	<i>in</i>	IN	3.94	3.94
	<i>mm</i>	MM	100	100
Units	<i>/pl</i>	QTY	64	320

PALLET LAYOUT



NOTES

Weights are approximate and do not include shipping pallet. Installation to applicable ICPI standards is required for warranty coverage. Made with natural materials, which vary in color, and Portland cement, which may effloresce - any implied warranty to the contrary is disclaimed.

PALLET SPECS

Pallet Weight	2848 lbs
Sq Ft/Pallet	75 sq.ft.



Distributed by:

www.aspent.com (800) 869-9600

www.pavestone.com

HOLLAND 4CM

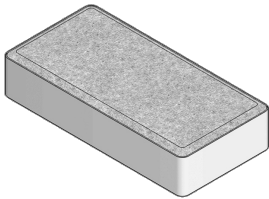
PRODUCT NUMBER # 215



- Smooth surfaces and classical chamfers define each stone to create texture and visual structure with timeless appeal
- Versatile 2:1 shape easily forms stacked, runner, basketweave, and herringbone patterns
- Suitable for behind-curb, pedestrian applications, such as patios and sidewalks, with proper pavement design and installation
- Joints and surfaces meet ADA gap and lippage requirements
- Made of durable concrete that won't decay, distort, or attract pests. Iron oxide pigments won't fade with extended UV exposure

The Holland series offers the Old World charm of a simple shape which can be installed in a variety of patterns to produce utilitarian or decorative pavement designs. Mixing these patterns with a combination of colors produces architectural effects limited only by the imagination. Holland is available in a range of heights to suit a variety of traffic conditions and base preparations, and in layer arrangements to facilitate mechanical installation.

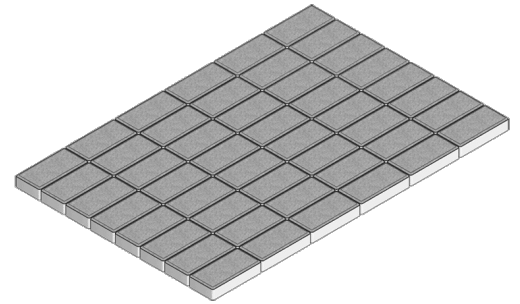
STONE(S)



4x8

Height	<i>in</i>	In.	1.57
	<i>mm</i>	MM.	40
Length	<i>in</i>	IN.	7.87
	<i>mm</i>	MM	200
Width	<i>in</i>	IN	3.94
	<i>mm</i>	MM	100
Units	<i>/pl</i>	QTY	720

PALLET LAYOUT



NOTES

Weights are approximate and do not include shipping pallet. Installation to applicable ICPI standards is required for warranty coverage. Made with natural materials, which vary in color, and Portland cement, which may effloresce - any implied warranty to the contrary is disclaimed.

PALLET SPECS

Pallet Weight	2899 lbs
Sq Ft/Pallet	155 sq.ft.



Distributed by:

www.aspent.com (800) 869-9600

www.pavestone.com

HOLLAND 6CM

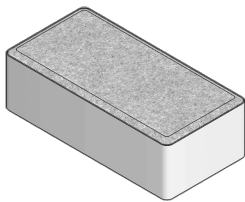
PRODUCT NUMBER # 217



- Smooth surfaces and classical chamfers define each stone to create texture and visual structure with timeless appeal
- Versatile 2:1 shape easily forms stacked, runner, basketweave, and herringbone patterns
- Suitable for medium vehicular applications, such as residential streets and commercial parking lots, with proper pavement design and installation
- Joints and surfaces meet ADA gap and lippage requirements
- Made of durable concrete that won't decay, distort, or attract pests. Iron oxide pigments won't fade with extended UV exposure. Meets or exceeds applicable requirements of ASTM C936 and C1782

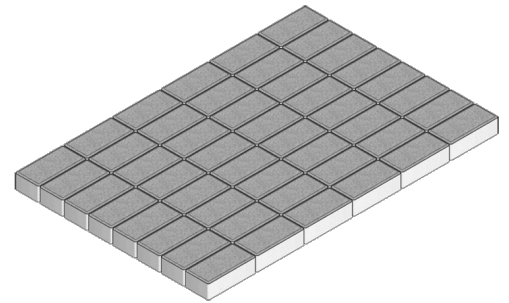
The Holland series offers the Old World charm of a simple shape where pavers can be installed in a variety of patterns to produce utilitarian or decorative pavement designs. Mixing these patterns with a combination of colors produces architectural effects limited only by the imagination. Holland is available in a range of paver heights to suit a variety of traffic conditions and base preparations, and in layer arrangements to facilitate mechanical installation.

STONE(S)



			4x8
Height	<i>in</i>	In.	2.36
	<i>mm</i>	MM.	60
Length	<i>in</i>	IN.	7.87
	<i>mm</i>	MM	200
Width	<i>in</i>	IN	3.94
	<i>mm</i>	MM	100
Units	<i>/pl</i>	QTY	480

PALLET LAYOUT



NOTES

Weights are approximate and do not include shipping pallet. Installation to applicable ICPI standards is required for warranty coverage. Made with natural materials, which vary in color, and Portland cement, which may effloresce - any implied warranty to the contrary is disclaimed.

PALLET SPECS

Pallet Weight	2728 lbs
Sq Ft/Pallet	103 sq.ft.



Distributed by:

www.aspent.com (800) 869-9600

www.pavestone.com

HOLLAND 3CM

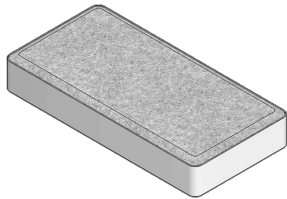
PRODUCT NUMBER # 218



- Smooth surfaces and classical chamfers define each stone to create texture and visual structure with timeless appeal
- Versatile 2:1 shape easily forms stacked, runner, basketweave, and herringbone patterns
- Suitable for behind-curb, pedestrian applications, such as patios and sidewalks, with proper pavement design and installation
- Joints and surfaces meet ADA gap and lippage requirements
- Made of durable concrete that won't decay, distort, or attract pests. Iron oxide pigments won't fade with extended UV exposure

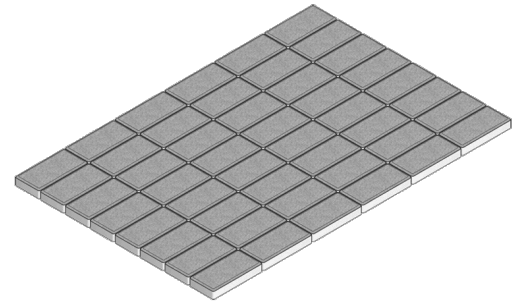
The Holland series offers the Old World charm of a simple shape where pavers can be installed in a variety of patterns to produce utilitarian or decorative pavement designs. Mixing these patterns with a combination of colors produces architectural effects limited only by the imagination. Holland is available in a range of paver heights to suit a variety of traffic conditions and base preparations, and in layer arrangements to facilitate mechanical installation.

STONE(S)



			4x8
Height	<i>in</i>	In.	1.18
	<i>mm</i>	MM.	30
Length	<i>in</i>	IN.	7.87
	<i>mm</i>	MM	200
Width	<i>in</i>	IN	3.94
	<i>mm</i>	MM	100
Units	<i>/pl</i>	QTY	960

PALLET LAYOUT



NOTES

Weights are approximate and do not include shipping pallet. Installation to applicable ICPI standards is required for warranty coverage. Made with natural materials, which vary in color, and Portland cement, which may effloresce - any implied warranty to the contrary is disclaimed.

PALLET SPECS

Pallet Weight	2884 lbs
Sq Ft/Pallet	206 sq.ft.



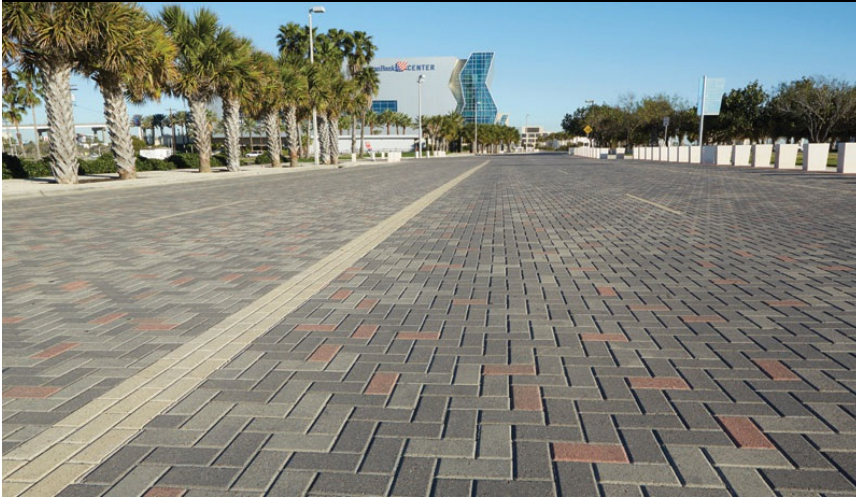
Distributed by:

www.aspent.com (800) 869-9600

www.pavestone.com

HOLLAND 8CM

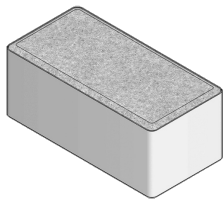
PRODUCT NUMBER # 219



- Smooth surfaces and classical chamfers define each stone to create texture and visual structure with timeless appeal
- Versatile 2:1 shape easily forms stacked, runner, basketweave, and herringbone patterns
- Suitable for heavy vehicular applications, such as municipal streets and minor arterials, with proper pavement design and installation
- Joints and surfaces meet ADA gap and lippage requirements
- Made of durable concrete that won't decay, distort, or attract pests. Iron oxide pigments won't fade with extended UV exposure. Meets or exceeds applicable requirements of ASTM C936 and C1782

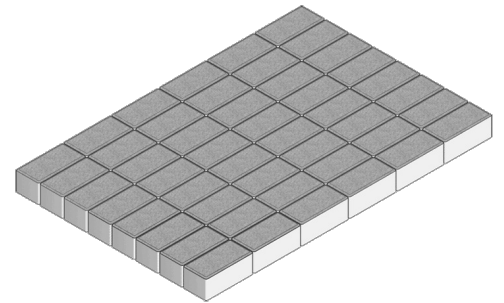
The Holland series offers the Old World charm of a simple shape where pavers can be installed in a variety of patterns to produce utilitarian or decorative pavement designs. Mixing these patterns with a combination of colors produces architectural effects limited only by the imagination. Holland is available in a range of paver heights to suit a variety of traffic conditions and base preparations, and in layer arrangements to facilitate mechanical installation.

STONE(S)



				4x8
Height	<i>in</i>	In.		3.15
	<i>mm</i>	MM.		80
Length	<i>in</i>	IN.		7.87
	<i>mm</i>	MM		200
Width	<i>in</i>	IN		3.94
	<i>mm</i>	MM		100
Units	<i>/pl</i>	QTY		384

PALLET LAYOUT



NOTES

Weights are approximate and do not include shipping pallet. Installation to applicable ICPI standards is required for warranty coverage. Made with natural materials, which vary in color, and Portland cement, which may effloresce - any implied warranty to the contrary is disclaimed.

PALLET SPECS

Pallet Weight	2988 lbs
Sq Ft/Pallet	83 sq.ft.



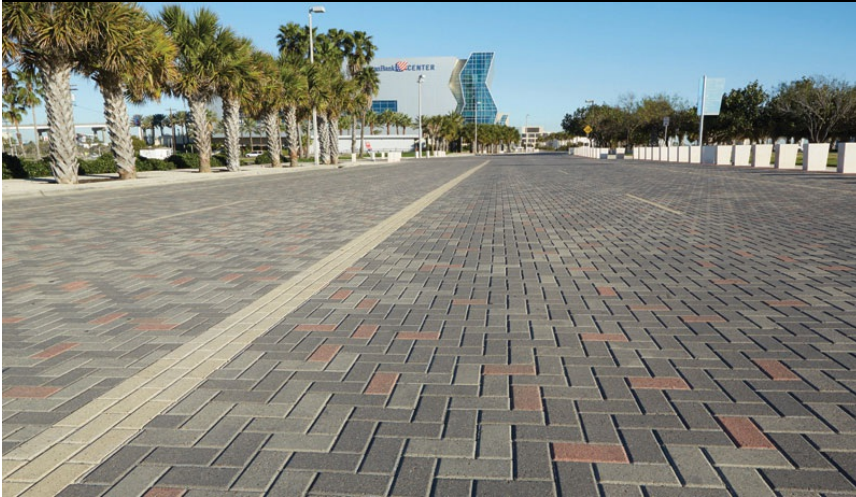
Distributed by:

www.aspent.com (800) 869-9600

www.pavestone.com

HOLLAND 4.5CM

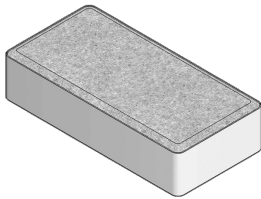
PRODUCT NUMBER # 220



- Smooth surfaces and classical chamfers define each stone to create texture and visual structure with timeless appeal
- Versatile 2:1 shape easily forms stacked, runner, basketweave, and herringbone patterns
- Suitable for light vehicular applications, such as residential driveways and parking stalls, with proper pavement design and installation
- Joints and surfaces meet ADA gap and lippage requirements
- Made of durable concrete that won't decay, distort, or attract pests. Iron oxide pigments won't fade with extended UV exposure

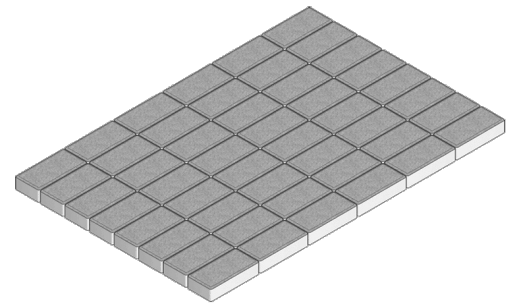
The Holland series offers the Old World charm of a simple shape where pavers can be installed in a variety of patterns to produce utilitarian or decorative pavement designs. Mixing these patterns with a combination of colors produces architectural effects limited only by the imagination. Holland is available in a range of paver heights to suit a variety of traffic conditions and base preparations, and in layer arrangements to facilitate mechanical installation.

STONE(S)



	4x8		
Height	<i>in</i>	In.	1.77
	<i>mm</i>	MM.	45
Length	<i>in</i>	IN.	7.87
	<i>mm</i>	MM	200
Width	<i>in</i>	IN	3.94
	<i>mm</i>	MM	100
Units	<i>/pl</i>	QTY	672

PALLET LAYOUT



NOTES

Weights are approximate and do not include shipping pallet. Installation to applicable ICPI standards is required for warranty coverage. Made with natural materials, which vary in color, and Portland cement, which may effloresce - any implied warranty to the contrary is disclaimed.

PALLET SPECS

Pallet Weight	2865 lbs
Sq Ft/Pallet	145 sq.ft.



Distributed by:

www.aspent.com (800) 869-9600

www.pavestone.com

HOLLAND 12CM

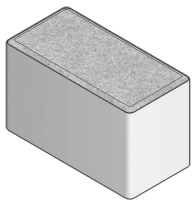
PRODUCT NUMBER # 222



- Smooth surfaces and classical chamfers define each stone to create texture and visual structure with timeless appeal
- Versatile 2:1 shape easily forms stacked, runner, basketweave, and herringbone patterns
- Suitable for heavy vehicular applications, such as municipal streets and minor arterials, with proper pavement design and installation
- Joints and surfaces meet ADA gap and lippage requirements
- Made of durable concrete that won't decay, distort, or attract pests. Iron oxide pigments won't fade with extended UV exposure. Meets or exceeds applicable requirements of ASTM C936 and C1782

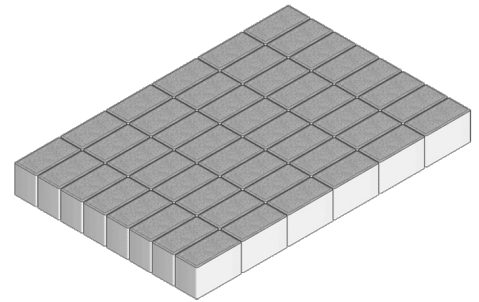
The Holland series offers the Old World charm of a simple shape where pavers can be installed in a variety of patterns to produce utilitarian or decorative pavement designs. Mixing these patterns with a combination of colors produces architectural effects limited only by the imagination. Holland is available in a range of paver heights to suit a variety of traffic conditions and base preparations, and in layer arrangements to facilitate mechanical installation.

STONE(S)



				4x8
Height	<i>in</i>	In.		4.72
	<i>mm</i>	MM.		120
Length	<i>in</i>	IN.		7.87
	<i>mm</i>	MM		200
Width	<i>in</i>	IN		3.94
	<i>mm</i>	MM		100
Units	<i>/pl</i>	QTY		288

PALLET LAYOUT



NOTES

Weights are approximate and do not include shipping pallet. Installation to applicable ICPI standards is required for warranty coverage. Made with natural materials, which vary in color, and Portland cement, which may effloresce - any implied warranty to the contrary is disclaimed.

PALLET SPECS

Pallet Weight	3472 lbs
Sq Ft/Pallet	62 sq.ft.



Distributed by:

www.aspent.com (800) 869-9600

www.pavestone.com

HOLLAND II 6CM

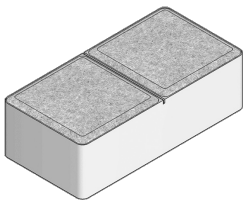
PRODUCT NUMBER # 227



- Smooth surfaces and classical chamfers define each stone to create texture and visual structure with timeless appeal
- Versatile 2:1 shape easily forms stacked, runner, basketweave, and herringbone patterns
- Suitable for medium vehicular applications, such as residential streets and commercial parking lots, with proper pavement design and installation
- Joints and surfaces meet ADA gap and lippage requirements
- Made of durable concrete that won't decay, distort, or attract pests. Iron oxide pigments won't fade with extended UV exposure. Meets or exceeds applicable requirements of ASTM C936 and C1782

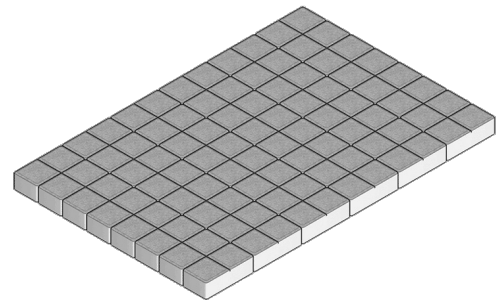
The Holland series offers the Old World charm of a simple shape where pavers can be installed in a variety of patterns to produce utilitarian or decorative pavement designs. Mixing these patterns with a combination of colors produces architectural effects limited only by the imagination. Holland is available in a range of paver heights to suit a variety of traffic conditions and base preparations, and in layer arrangements to facilitate mechanical installation.

STONE(S)



	4x8		
Height	<i>in</i>	In.	2.36
	<i>mm</i>	MM.	60
Length	<i>in</i>	IN.	7.87
	<i>mm</i>	MM	200
Width	<i>in</i>	IN	3.94
	<i>mm</i>	MM	100
Units	<i>/pl</i>	QTY	480

PALLET LAYOUT



NOTES

Weights are approximate and do not include shipping pallet. Installation to applicable ICPI standards is required for warranty coverage. Made with natural materials, which vary in color, and Portland cement, which may effloresce - any implied warranty to the contrary is disclaimed.

PALLET SPECS

Pallet Weight	2884 lbs
Sq Ft/Pallet	103 sq.ft.



www.pavestone.com

HOLLAND II 8CM

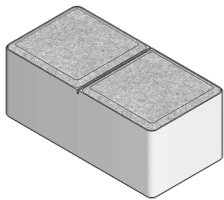
PRODUCT NUMBER # 229



- Smooth surfaces and classical chamfers define each stone to create texture and visual structure with timeless appeal
- Versatile 2:1 shape easily forms stacked, runner, basketweave, and herringbone patterns
- Suitable for heavy vehicular applications, such as municipal streets and minor arterials, with proper pavement design and installation
- Joints and surfaces meet ADA gap and lippage requirements
- Made of durable concrete that won't decay, distort, or attract pests. Iron oxide pigments won't fade with extended UV exposure. Meets or exceeds applicable requirements of ASTM C936 and C1782

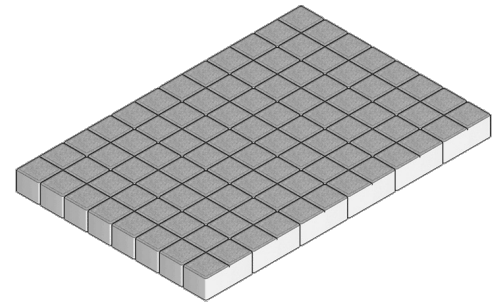
The Holland series offers the Old World charm of a simple shape where pavers can be installed in a variety of patterns to produce utilitarian or decorative pavement designs. Mixing these patterns with a combination of colors produces architectural effects limited only by the imagination. Holland is available in a range of paver heights to suit a variety of traffic conditions and base preparations, and in layer arrangements to facilitate mechanical installation.

STONE(S)



				4x8
Height	<i>in</i>	In.		3.15
	<i>mm</i>	MM.		80
Length	<i>in</i>	IN.		7.87
	<i>mm</i>	MM		200
Width	<i>in</i>	IN		3.94
	<i>mm</i>	MM		100
Units	<i>/pl</i>	QTY		384

PALLET LAYOUT



NOTES

Weights are approximate and do not include shipping pallet. Installation to applicable ICPI standards is required for warranty coverage. Made with natural materials, which vary in color, and Portland cement, which may effloresce - any implied warranty to the contrary is disclaimed.

PALLET SPECS

Pallet Weight	2968 lbs
Sq Ft/Pallet	83 sq.ft.



Distributed by:

www.aspent.com (800) 869-9600

www.pavestone.com