

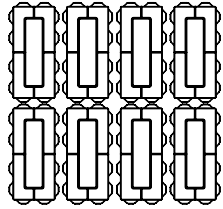


NEW

AQUASTORM

DESCRIPTION: Paver TEXTURE: Smooth

PALLET OVERVIEW



Specifications per pallet		Imperial	Metric
Cubing		78.39 ft ²	7.28 m ²
Weight		2412 lbs	1 094 kg
Number of rows		7	
Coverage per row		11.20 ft ²	1.04 m ²
Linear coverage per row	Depth	13.39 lin. ft	4.08 lin. m
	Length	6.69 lin. ft	2.04 lin. m



Aqua Storm paver meet and exceeds the requirements of ASTM C1319 for Concrete Grid Paving Units.

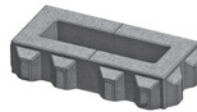
NOTES

Aquastorm is only available in Eastern USA. See page 15 for list of Eastern States.

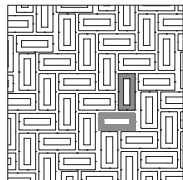
See page 44 to 47 for more technical information. When used in a permeable pavement application, see page 83 to 89 for more technical information.

JOINT WIDTH: 1 5/8" (41 mm)
% OF SURFACE OPENING: 38 %

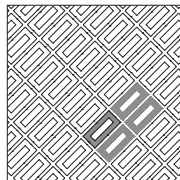
Unit dimensions	in		mm		Units /pallet
	L	D	H	A	
Height			3 15/16	100	56 units
Depth			10 1/16	255	
Length			20 1/16	510	



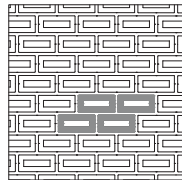
01 | Herringbone pattern



02 | Linear pattern

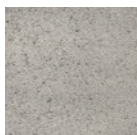


03 | Linear pattern



Patterns are for design inspiration only. The installer is responsible to calculate & purchase the correct amount of material.

grey



Distributed by:



www.aspent.com

(800) 869-9600