



HD²
COLLECTION

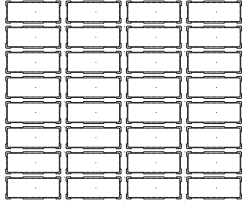
Stonedge
COLLECTION

NEW

MIKA

DESCRIPTION: Paver **TEXTURE:** HD² Slate

PALLET OVERVIEW



| Specifications per pallet | Imperial | Metric |
|---------------------------|------------------------------|----------------------|
| Cubing | 107.63 ft² | 10.00 m ² |
| Weight | 2 998 lbs | 1 360 kg |
| Number of rows | 10 | |
| Coverage per row | 10.76 ft ² | 1.00 m ² |
| Linear coverage per row | Depth 11.77 lin. ft | 3.59 lin. m |
| | Length 29.25 lin. ft | 8.92 lin. m |



NOTES

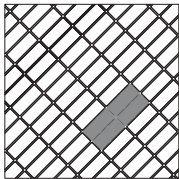
See page 44 to 47 for more technical information. When used in a permeable pavement application, see page 83 to 89 for more technical information.

JOINT WIDTH: 5/8" (15 mm)
% OF SURFACE OPENING: 7.8 %

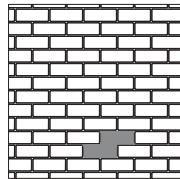
| Unit dimensions | in | | mm | | Units/pallet |
|-----------------|--------|-----|----|-----------|--------------|
| | L | H | A | | |
| Height | 2 3/4 | 70 | | 320 units | |
| Depth | 4 7/16 | 112 | | | |
| Length | 11 | 279 | | | |



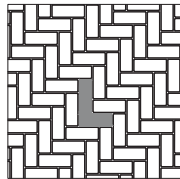
01 | Linear pattern
Checkerboard 45°



02 | Linear pattern



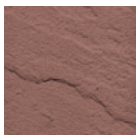
03 | Herringbone pattern



Patterns are for design inspiration only. The installer is responsible to calculate & purchase the correct amount of material.

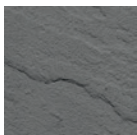
NEW

burgundy



NEW

carbon



rock garden brown



Distributed by:

ASIP
ENTERPRISES

www.aspent.com

(800) 869-9600