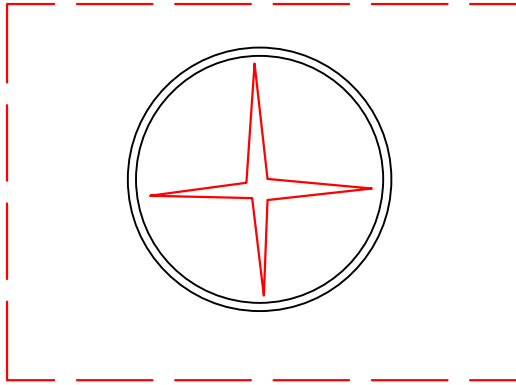


Atlantis[®] Matrix[®] / D-Raintank[®] Typical Tank Inlet Outlet Design

Inlet Pipe

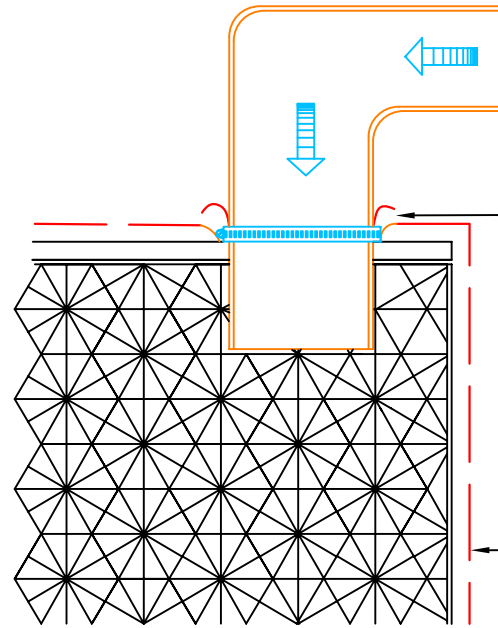


End View of Pipe

1. Cut an "X" in the Geotextile slightly larger than the pipe.
2. Insert the pipe.
3. Pull the Geotextile up and around the pipe creating a "boot".
4. Secure with hose clamp or tape.

DISCLAIMER: All information provided in this publication is correct to the best of the Company' Knowledge and is given out in Good Faith. This information is intended only as a general guide, no responsibility can be accepted for any errors, omissions or In-correct assumption. As each project is unique, and as Rebirth Pty Ltd, Atlantis Water Management, Atlantis Corporation Pty Ltd and Its Distributors and Agents World Wide have no direct control over the methods employed by the User in Specifying, Installing or Supervising of its products hence no Responsibility is accepted by Rebirth Pty Ltd, Atlantis Water Management, Atlantis Corporation Pty Ltd and Its Distributors and Agents World Wide. Users should satisfy themselves as to the suitability of the product for their purpose.

All product designs, and specification are subject to change without further notice. All Atlantis[®] products are tested in approved NATA laboratories, and safe allowed tolerance should be practised in actual field, due to any unforeseen situations, onsite and on products. All material contained within this brochure is copyright, and belongs to Rebirth Pty Ltd Australia. No part of this brochure may be reproduced or transmitted in any form or by any means, electronic, mechanical, photocopying, recording or otherwise, without prior written permission of Rebirth Pty Ltd. Australia, Atlantis Water Management, Atlantis Corporation Pty Ltd. Copyright © 2005 by Rebirth Pty Ltd. Australia, Atlantis Water Management, Atlantis Corporation Pty Ltd. Australia.



IMPORTANT

Any water entering the Atlantis system must be filtered by an Atlantis Filtration device. **DO NOT** connect stormwater pipes directly in to Atlantis tank system.

Non-corrosive hose clamp or tape used to fasten liner to pipes to prevent backfil from entering structure.

Non-woven Polypropylene Geotextile filter fabric encasing Atlantis[®] Matrix[®] / D-Raintank[®]

Outlet Pipe

Non-corrosive hose clamp or tape used to fasten liner to pipes to prevent backfil from entering structure.

Non-woven Polypropylene Geotextile filter fabric encasing Atlantis[®] Matrix[®] / D-Raintank[®].

