



AND



# The Geosource Update

VOLUME I ISSUE 2

AUGUST 1, 2009

## ASP And Quick Supply Announces Launch of New and Improved Website!

### ASP Enterprises & Quick Supply Co. Locations:

#### Corporate Office:

275 Northwest Blvd.  
Fenton, MO 63026  
Phone: 636-343-4357  
Toll-free: 800-869-9600  
Fax: 636-343-4723

#### Kansas City Office:

109 NW Victoria Drive  
Lee's Summit, MO 64086  
Phone: 816-554-1191  
Toll-free: 800-519-2304  
Fax: 816-554-2262

#### Omaha Office:

15263 Cooper Street  
Omaha, NE 68138  
Phone: 402-861-8579  
Toll-Free: 877-678-8027  
Fax: 402-861-8592

#### Quick Supply:

6620 NW Toni  
Des Moines, IA 50313  
Phone: 515-289-1271  
Toll-Free: 800-362-2245  
Fax: 515-289-1272

#### Wichita Warehouse:

5755 S. Hoover Rd #5  
Wichita, KS 67215

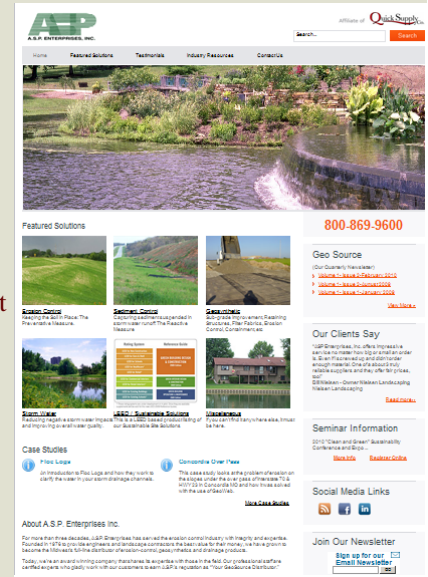
ASP Enterprises and Quick Supply Co. have been working very hard since the first of the year to create a new website that will be easier to use, functionally simpler, and with a broader content of information. The beginner in erosion control can learn, on-line, the fundamentals of erosion control and the advanced user can get to a specification page in less than 3 clicks!!

It is a solution based website. It does not expect you to know the product you want to get more information on. It helps you find the solution to your environmental challenge.

We have organized it into 6 major categories:

- Erosion Control-Keeping the soil in place
- Sediment Control-Capturing Sediment
- Geosynthetics-Polymeric based solutions
- Stormwater Management-Quality and Quantity
- LEED Sustainable Solutions-A USGBC Viewpoint
- Miscellaneous Solutions-the catch all

Specifications can be found in the Featured Solutions Sections in the same organizational format. We also have videos, archived newsletters, Industry links, testimonials, and much more. We are excited to roll this out to you and hope you find it extremely useful. Take a few clicks to get yourself acquainted: [www.aspent.com](http://www.aspent.com)



## The Editor's Viewpoint-Pricing Pressures

If you haven't felt the pinch of higher prices in construction products, consider yourself lucky. We have seen 30% increases in geotextile fabrics, 20% increases in impermeable liners, significant increases in plastic pipe, and the list goes on. It is an interesting time when our business is somewhat soft, and yet the cost of materials continues to go up significantly. ASP and Quick Supply have never been the lowest cost supplier, but we hope we more than make up for that with superior service, on-site technical support and by creating the markets for our materials with exhaustive specification work. We work everyday with engineers and architects helping them select the best solutions for their site projects, performing preliminary design recommendations and cost estimates, and frequently recommending contractors to do the work. It is all part of our commitment to be an integral part of our community. All this also costs money and those costs are incorporated into our prices as well.

We hope you appreciate what we do in the design world and help support us by buying our products. That is how we supply superior service as well. We do it because we know it is what you need to provide exceptional service to your customers. We are here to do whatever it takes to get the job done. Thank you all for your business in the past and your business in the future.

# Product Spotlight

In an effort to get out some new product information, we have changed this section to highlight a couple of new and exciting products that have come to market:



Rolling out RS580i high strength geotextile



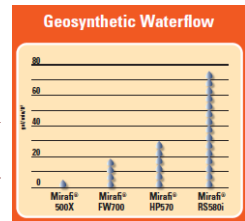
MSE Reinforced Slope vegetated with Flexterra HP-FGM



Our 3M representative demonstrating the spray pattern and holding power



**Tencate Mirafi RS580i-RSi-Series** Woven Geosynthetics are used for varying application needs including: base course reinforcement and subgrade stabilization for road, runway and railway construction; embankment stabilization on soft foundations; reinforcement for mechanically stabilized earth (MSE) structures; liner support, voids bridging, reinforcement over soft hazardous pond closures and other environmental market applications. <http://www.tencate.com/smartsite.dws?ch=sec&id=11938>



**Flexterra HP-FGM**-New, patent-pending Flexterra® HP-FGM™ (High Performance-Flexible Growth Medium) elevates the near-perfect performance of the original Flexterra FGM to an even higher level. Hydraulically applied Flexterra HP-FGM delivers:

- The highest germination and growth establishment available
- Greater than 99% erosion control effectiveness immediately upon application
- 100% biodegradability
- 100% recycled wood fiber
- Crimped interlocking man-made fibers add strength
- Greater safety for even the most sensitive aquatic environments because it's proven to be non-toxic



Green Design Engineering by Profile

[http://aspent.com/files/2010/06/407.Flexterra\\_HP\\_FGM\\_Sell\\_Sheet.pdf](http://aspent.com/files/2010/06/407.Flexterra_HP_FGM_Sell_Sheet.pdf)



**3M Geotextile Adhesive**-3M has approached ASP and Quick Supply with a new application of their Holdfast 70 adhesive-geotextile bonding. Whether it is for seaming of overlaps, as alternative to sewing geotextile, or to bond a geotextile to a vertical surface, Holdfast 70 has exceptional holding power. The bond is as strong or stronger than most fabrics we have tried it on.

- Versatile holding power to replace nails and other fasteners
- Wide spray pattern and fast coverage for vertical and horizontal surfaces
- Short dry time and long open time to work at the best pace for the job
- No cleaning or purging of hose and applicator necessary

[http://www.3m.com/us/mfg\\_industrial/contractor/3M\\_Scotch-Weld\\_HoldFast\\_70.html](http://www.3m.com/us/mfg_industrial/contractor/3M_Scotch-Weld_HoldFast_70.html)



## Tell it like it is!!

### We want your feedback?

What would you like as a part of this newsletter? What civil site solutions can we provide to solve problems you are having? We want to hear it all!!

We would love to hear from you. Email us at [news@aspent.com](mailto:news@aspent.com) and give us your thoughts. We are always looking to improve our services to our customers.



## ASP Employee Profile

**Name:** Luke Truitt

**Branch:** Quick Supply-Des Moines, IA

**Office Number:** 800-362-2245



Luke Truitt came to us last fall from Rhino Materials. We were very fortunate to be looking for some sales help in the landscape division of Quick Supply when Luke called. He has a great spirit and desire to be successful. His 7 years of experience in the retaining wall and paver block market along with his expertise in the Aquascape pond products have really stepped up our game in the landscape supply business.

Luke is married to his wife Lindie. They have 2 children: Tate-3 1/2 years old and Will-6 weeks-yikes-so if Luke has sleep eyes, you know why. Luke went to Boyer Valley High School in Dunlap and Buena Vista University in Stormlake.

When Luke isn't helping customers select the right product for a project or figuring out which pond pump to use, he enjoys golf and searching the countryside for whitetail with his bow. Please help us welcome Luke to the ASP/Quick Team.

# Geosource Solution Center

**Project Name:** Benedictine College Memorial Grotto

**Project Location:** Atcheson, Ks

**Purpose of Project:** Vegetate and Stabilize very steep slopes

**Products:** Profile Product's Green Armor System

**SCOPE:** When Benedictine College wanted to stabilize and vegetate the steep (1:1) Loess soil hillside surrounding the newly created Memorial Grotto, they knew that they would have to use a system that was not only affordable but as close to a sure thing as possible. They needed to get it right the first time. It was already past the normal seeding date for the year and the access to the slope was limited so that repairs would be next to impossible.

**DESIGN SOLUTION:** The solution was a geosynthetically reinforced and vegetated system that resulted in a slope that looked like a finely manicured lawn. The Profile Products GREENARMOR System was the answer. The GREENARMOR System combines engineering and agronomic excellence to create one of the world's most effective Green-Engineering alternatives. Enkamat TRM (Turf Reinforcement Mat) provides a permanent, lofty and open matrix that is hydraulically infilled with Flexterra FGM (Flexible Growth Medium) to intimately bond soil and seeds while accelerating growth. This unique system protects against elevated levels of hydraulic lift and shear forces while encouraging turf establishment and long-term root reinforcement. The results: growing denser vegetation, faster, in areas where common TRMs have fallen short. This synergistic combination of cost effective technologies enables the GREENARMOR System to provide unprecedented levels of design safety.



Installing the Enkamat base.



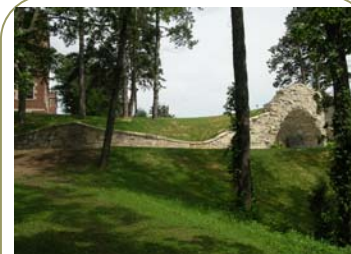
3 weeks later with vegetation sprouting.



3 dimensional TRM Structure installed with 6" staples



Hydraulically applying Flexterra FGM in and on the Enkamat TRM structure



A look at the finished product.

## Calendar of Events

October 19-20-Greening Midwest Communities-MU/HBA-Jefferson City, MO  
[www.muconf.missouri.edu/gmcc/](http://www.muconf.missouri.edu/gmcc/)

Oct. 26-28 Great Rivers IECA Fall Conference-Omaha, NE  
[www.greatriversieca.org](http://www.greatriversieca.org)

Nov. 14-16-APWA Fall Conference-Lake of the Ozarks  
<http://missouri.apwa.net/>

Nov 17-19-GreenBuild 2010, Chicago, IL  
[www.greenbuildexpo.org](http://www.greenbuildexpo.org)

In an effort to be **GREEN**, we are offering our newsletter via email. We are working hard to keep the file size small to keep it easy to get.

We need one thing from you-your email address. We will not give your address out to any of our manufacturers, trade associations or anyone else. We value your security and would never jeopardize our relationship with you. We know we are in the era of way too many emails but we do hope you see a value in our newsletter.

*Please*

*put me on your Email newsletter list*

Name: \_\_\_\_\_

Title: \_\_\_\_\_

Company Name: \_\_\_\_\_

Email Address: \_\_\_\_\_

(please fax this page to 636-343-4723 or email to [news@aspent.com](mailto:news@aspent.com))



## Firestone's EPDM Impermeable Liner

Firestone Specialty Products manufactures high-quality, durable EPDM geomembrane systems used in a wide variety of decorative and critical containment applications. Firestone EPDM Geomembrane Systems offer the strength and resilience to perform in many of the most demanding environments, making them ideal for:

- Agricultural Pits and Ponds
- Algae Harvesting Applications
- Aquaculture Applications
- Evaporation Ponds
- Exposed Covers and Caps
- Golf Course Water Features
- Irrigation – Canals/Reservoirs
- Mining Applications
- Stormwater Management Applications



Available in standard (EPDM) or reinforced with a scrim (EPDM-R), Firestone EPDM Gomebrane panels come in a variety of sizes and gauges. Contact ASP for details.

### EASY TO INSTALL

The numerous panel sizes available allow for a high degree of project driven customization, reducing the time and effort needed to install the membrane. Additionally, Firestone's Quick-Seam™ Tape provides an easy, time tested and proven dependable seaming solution without requiring special tools or utilities for installation.

### EXTREMELY FLEXIBLE

Firestone standard EPDM Geomembrane can elongate over 300 percent, offering exceptional conformance, a high degree of interface friction and lay flat characteristics that are ideal for even the most irregular shapes and contours.

### EXCELLENT WEATHERING RESISTANCE

Even when exposed to UV, ozone, extreme temperatures and other harmful environmental conditions, the specially compounded material of Firestone's EPDM Geomembranes prevents cracking. The result is outstanding age stability with little or no maintenance.

### FISH AND PLANT FRIENDLY

Firestone EPDM Geomembranes are specifically formulated to be safe for fish and plant life.

### ACCESSORIES

Firestone's EPDM Geomembranes are complemented by a full line of accessories to facilitate installation and allow for a convenient, one-stop source for materials.

Please visit the Firestone Specialty Products' website, [www.firestonesp.com](http://www.firestonesp.com), for the most current technical information



### Did you know?

Did you know that ASP and Quick supply have over 20,000 sqft of warehoused inventory and another 5 acres of outside storage full of the materials you need? We have what you need, WHEN you need it!!!!



A.S.P. ENTERPRISES, INC.

275 Northwest Blvd.  
Fenton, MO 63026

800.869.9600



Stormwater Treatment Pond



Waste Water Treatment Plant

*The Logo Corner:  
Here is just a few of the  
Manufacturers we know  
and trust:*

