



## MS4 Permit Manager™ Software MS4 Web™ Software

Alisa Peterson  
PH: (847) 201-1604  
Cell: (847) 738-1605

Email: [alispeterson@comcast.net](mailto:alispeterson@comcast.net)

[www.cbi-systems.com](http://www.cbi-systems.com)

### Purpose of Using Software:

- Centralized/Organized record keeping (Server/Web)
- Standardization of Site Inspection/Follow Up Actions and Procedures
- Preparedness for Regulatory Audits (data, files, photos, maps, etc.)
- Easily Prepare/Print Annual Report

### MS4 Permit Manager™ Features:

- SWMP development with measurable goals, implementation schedules, and proposed budgets
- Track/Inventory Outfalls/Inspections
- Track Illicit Discharges
- Track Construction Sites
- Track Post-Construction Sites
- Track Municipal/Industrial/ Commercial Facilities
- Track Citizen Reports
- Track Training Records
- Built-In GIS Map functionality
- Unlimited photo and file linkage
- Reporting/Automatic generation of Annual Reports

### Webinars Available!

Schedule a one-hour webinar for you to view the software at the comfort of your desk. You can also hold one in a meeting room.

### CBI Systems Ltd. Products

CBI has a desktop software version and a web-based software product:

- **MS4 Permit Manager™ (Desktop)**
- **MS4 Web™ (Web-based version)**

### MS4 Web™ - Web-based Features:

- Real time inspection recordkeeping
- Web-access field computers – Tablet PCs and Tuff Book style computers
- 3<sup>rd</sup> Party Data Entry (i.e., Consultants, Construction Contractors)
- Enhanced Security Settings
- Unlimited Photos/File linkage
- ESRI ArcGIS Mapping software included; GIS Data Import available.

### MS4 SWMP Setup Services Available:

- Enter SWMP
- Enter BMPs
- Enter Implementation Tasks and Goals
- Import Existing map files (including outfalls, construction sites, inspection data, post construction sites, etc.)
- Stormwater Permit Consulting services
- Built-in GIS Map functionality and map printing

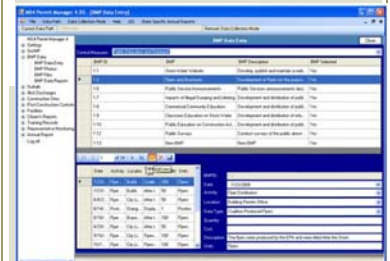


Your Geosource Distributor

**AND**



MS4 Software is integrated with GIS



BMP Data Entry Screen of Activity Records

### *The Logo Corner:*

*Here is just a few of the Manufacturers we know and trust:*



Storm Water Permit Software  
By Stormwater Permit Specialists

[Click Here to Get a Free Online Demo...](#)



Request to be notified of the next round of webinars. In one hour, you can learn all the value this software can bring to your organization. It is free to watch and listen and will ultimately save you a great deal of time and money. Email [dthieman@aspent.com](mailto:dthieman@aspent.com) to request information on the next series of webinars.

### **Special Notice for Quick Supply Customers**

Quick Supply will be hosting a morning seminar on January 26th at the Hilton Garden Inn, Johnston, IA on the following topics:

- **Tencate Mirafi** and the RSi Series Woven Geotextile Solutions for subgrade improvement
  - **PaveDrain** Permeable Articulating Concrete Block Mat Paving Surface for creating permeable solutions
- Contact Steve at [skrehbiel@quicksupplydm.com](mailto:skrehbiel@quicksupplydm.com) for more info.