



Your Geosource Distributor

AND



# The Geosource Update

VOLUME 3 ISSUE 3



NOVEMBER 22, 2011

## ASP/Quick Supply Re-opens Registration for the "Clean and Green" Sustainability Conference and Expo

ASP Enterprises and Quick Supply Co. are pleased to announce the dates and locations for the "Clean and Green" Sustainability Conference and Expo. Our virtual project is shaping up very nicely and it looks to be a great presentation tool for showing particular solutions and how they apply to a project site. As a result of the feedback you provided from past conferences, our format will be a little different this year in that almost all of our speakers will be technical experts from the manufacturers. We will have around 16 speakers throughout the course of one day. Each speaker will describe the solution they represent: how it functions, how to design with it, with lots of pictures of successful installations.

As in past years, we will also have sufficient time in an exhibit hall setting for you to discuss product specifics with each of the manufacturers and have the opportunity to see solutions you may or may not be familiar with. We have again invited over 20 vendors to participate and for many of them, the only time you would be able to visit with them would be at a national showcase like IECA or Stormcon. Again we are trying to bring special content to the local markets.

We hope you will join us. We are excited to bring you the new format and new solutions!!

	<ul style="list-style-type: none"> <li>• <b>Omaha</b> - March 27th</li> <li>• <b>Des Moines</b> - March 28th</li> <li>• <b>Kansas City</b> - March 29th</li> <li>• <b>St. Louis</b> - March 30th</li> </ul>	
	<p><b>Your Geosource Distributor - Sustainable Stormwater Solutions</b></p>	

## ASP Enterprises & Quick Supply Co. Locations:

### Corporate Office:

1099 Cassens Ind. Ct.  
Fenton, MO 63026  
Phone: 636-343-4357  
Toll-free: 800-869-9600  
Fax: 636-343-4723

### Kansas City Office:

109 NW Victoria Drive  
Lee's Summit, MO 64086  
Phone: 816-554-1191  
Toll-free: 800-519-2304  
Fax: 816-554-2262

### Omaha Office:

15263 Cooper Street  
Omaha, NE 68138  
Phone: 402-861-8579  
Toll-Free: 877-678-8027  
Fax: 402-861-8592

### Quick Supply- Des Moines:

6620 NW Toni  
Des Moines, IA 50313  
Phone: 515-289-1271  
Toll-Free: 800-362-2245  
Fax: 515-289-1272

### Wichita Warehouse:

5755 S. Hoover Rd #5  
Wichita, KS 67215  
(316) 393-1554

## The Editor's Viewpoint: A Lot to be Thankful For

By Don Thielemann, CPESC, LEED GA

To say that 2011 was a challenging year is an understatement. We have experienced an unprecedented level of bankruptcies, business door closings, layoffs, etc in our industry and it promises to be a rough winter as well. It is very easy to listen to all the doom and gloom and get quite depressed in the process. This morning on the radio, I listened to a story about a woman who was being foreclosed on her house and was fighting the system to keep it. At the end of the story, it stated that she and her husband had been out of work for 2 years. Wow!

I suddenly realized that we still have a heck of a lot to be thankful for. While the industry is struggling, many of us managed to squeak out another year still in business. ASP and Quick Supply have continued to diversify its product offering to meet the demands of the market, all while striving to continue to be the leader in our core products: Erosion and Sediment Control, Geosynthetics, Storm Water, Green Solutions, etc. We have retained strong relationships with all of our vendors and have continued to manage our branches to have enough inventory to respond to most any need from our customers. We have jumped into the hardscape business in St. Louis in a big way and will continue to grow that business, never forgetting that we need to be the very best we can be at servicing our customers with all of our solutions.

We certainly have a lot to be thankful for. We would like to thank each and every customer that has purchased from us this year or in the past, and I hope we continue to earn your business in the future and for many years to come. Thank you for your business and let's hope the economy turns around a bit so that even more in the industry can have something to be thankful for in 2012.



# Product Spotlight

## Atlantis D-Raintank Rainwater Harvesting System Pioneer International Hi-Bred Project

Owner: Pioneer International Hi-Bred  
 Designer: Confluence - Landscape Architects; Wahaso Water Harvesting Solutions  
 Contractors: Graham Construction and McAninch



The excavation was completed and the fabric and liner was installed.



1,079 Triples Atlantis D-Raintanks were assembled and placed on the a 6" sand layer on liner bottom.



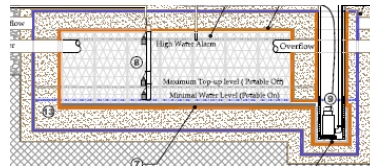
The Atlantis D-Raintanks were then wrapped in fabric and a sand biofiltration layer was placed.



Pioneer Hi-Bred, a DuPont business headquartered in Des Moines, Iowa, is the worlds leading developer and supplier of advanced plant genetics, agronomic support and service to farmers. Innovative and customer focused, Pioneer seeks to increase farmer productivity and profitability, and to develop sustainable agricultural systems for people everywhere.

In the spring of 2011 Pioneer started the construction of an additional six new green houses to the already, high tech germination plant in Johnston. Pioneer engineers, with the sustainability directors of the company, put together a plan to capture storm water to feed their new houses. The project called for constructing a 100,000 gallon Atlantis Modular Rainwater harvesting system. The 50'x200' basin consisted of 1,079 triple Atlantis tanks which were wrapped in a geotextile and encased in a 45 mil. Firestone EPDM impermeable liner. The tank was designed to capture the storm water from rooftops and parking lots, channeled through a CDS system (continuous deflection separation) and captured within the tanks to be irrigated back, supplying the new green houses with clean filtered storm water.

Once the excavation was complete, the project took roughly three days to complete the installation of the liner and tanks. With the technical assistance supplied by ASP Enterprises and Quick Supply Co. starting with the initial lunch presentation with Confluence all the way through to the project pre-bid meeting, installation training and the installation monitoring, the project was a huge success.



Steve Krehbiel, Quick Supply Co.

## Tell it like it is!!

**We want your feedback?**  
 What would you like as a part of this newsletter? What civil site solutions can we provide to solve problems you are having? We want to hear it all!!

We would love to hear from you. Email us at [news@aspent.com](mailto:news@aspent.com) and give us your thoughts. We are always looking to improve our services to our customers.



## ASP Enterprises Employee Profile

**Name:** Todd Noble  
**Branch:** Lee's Summit, MO  
**Office Number:** 800-519-2304  
**Direct Number:** 816-590-2773



Todd Noble joined the ASP family in September as a sales consultant covering mid-Missouri, the Kansas City metro, and north/central Kansas. He has been in the construction industry for 6 years and can assist you with our full line of products. He is excited to be on board and we expect great things from him.

Todd and his family reside in a suburb of Kansas City. When Todd is not coaching his daughter's fast pitch softball team or at his son's football games he enjoys many outdoor activities like hunting, mountain biking, and skiing. Todd can find a good reason to watch any college football game and he remains a proud KC Chiefs fan in good times and bad. Feel free to contact Todd for assistance with your projects. He is looking forward to serving you.

# Geosource Solution Center

**Project Name:** Stormwater Pond Shoreline Erosion Control

**Project Location:** Various Locations around Kansas

**Problem:** Shore line erosion due to wave action and overland flow

**Solution:** Native vegetation reinforced with VMax3 Turf Reinforcement Mats

**Designer:** Kim Austin with Atwell (formerly with Terracon)

**Contractor:** Kirk Excavating and Premier Landscaping

**Owner:** Several Home Owners Associations

**Product Used:** North American Green C350, C125, P-550. Also Conlock Articulating Concrete blocks were incorporated into the project on the downstream weir.

**Background:** Stormwater ponds in Wichita are a very common BMP to detain storm water, while also considering it an amenity that garners additional value to a homeowner. Frequently, 3-5 years after the ponds are complete, problems arise in regards to erosion from wave action. The very nature of these ponds call for water level inconsistency and waves begin to erode the shoreline. In one particular case, irrigation lines were exposed and home owners were losing valuable real estate. Again, water level fluctuation is the nature of a storm water pond as rain events and droughts occur. Erosion protection on these slopes must be installed the entire range of possible water elevations.



It was the evaluation and performance of several products that brought ASP Enterprises into these projects. In all cases, developers were looking for a cost effective alternative to rip rap. Kim Austin of Atwell previously with Terracon was asked to evaluate many of these HOA ponds.

Several products were given consideration and the North American Green's Vmax3 line of TRMs and C350. the composite TRM, was determined to be the product that would provide a stand alone solution capable of withstanding the incisions from installing the native plugs without compromising the integrity of the product. Kim was also looking for a more natural solution, one that would enhance the pond as an amenity and improve the wildlife habitat.

Four years later, we have a permanent and stable shoreline plus an eco-friendly environment for desirable fish and other wildlife. A dramatic increase in butterflies, song birds, dragonflies, damselflies and other beneficial pollinators have been recorded. Shorebirds including great blue heron, great egret, cattle egret, snowy egret and little blue heron have also increased in numbers plus a significant reduction in Canada geese. Another critical component of an eco-friendly shoreline is public education and proper maintenance. A vegetated shoreline will need 3-5 years to establish and the C350 provides the protection against soil erosion allowing the root systems to take over and permanently stabilize the area. If maintained correctly, a native system lowers the maintenance costs for the HOA/developer. Several additional projects have spun off of this very successful solution.

Author: Jeff Pearce-A.S.P. Wichita

Tensar. NORTH AMERICAN GREEN



*This is what the lake edge looked like before installation.*



*Installation of the Vmax3 C-350 Turf Reinforcement Mat*



*An Eco-friendly/Environmental solution*

THINK GREEN

In an effort to be **GREEN**, we are offering our newsletter via email. We are working hard to keep the file size small to keep it easy to download.

We need one thing from you-your email address. We will not give your address out to any of our manufacturers, trade associations or anyone else. We value your security and would never jeopardize our relationship with you. We know we are in the era of way too many emails but we do hope you see a value in our newsletter.

*Please*

*put me on your Email newsletter list*

Name: \_\_\_\_\_

Title: \_\_\_\_\_

Company Name: \_\_\_\_\_

Email Address: \_\_\_\_\_

(please fax this page to 636-343-4723 or email to [news@aspent.com](mailto:news@aspent.com))

## Calendar of Events

Nov 30-Dec. 1: AGC-MMO-Coop Meeting, Lake Ozark, MO  
<http://www.agcmo.org>

Dec 12-14: Heartland Green Industry Expo, Overland Park, KS  
[www.mokanstma.org](http://www.mokanstma.org)

Jan. 9: AGC-IA-90th Annual Convention-Des Moines, IA  
[www.agcia.org](http://www.agcia.org)

Jan 15-17: KLICA-Winter Convention, Manhattan, KS  
[www.kansaslica.com](http://www.kansaslica.com)

Jan 17-19: NELICA-Annual Meeting, Kearney, NE  
[www.nelica.com](http://www.nelica.com)



## MS4 Permit Manager™ Software MS4 Web™ Software

Alisa Peterson  
PH: (847) 201-1604  
Cell: (847) 738-1605

Email: [alisapeterson@comcast.net](mailto:alisapeterson@comcast.net)

[www.cbi-systems.com](http://www.cbi-systems.com)

### Purpose of Using Software:

- Centralized/Organized record keeping (Server/Web)
- Standardization of Site Inspection/Follow Up Actions and Procedures
- Preparedness for Regulatory Audits (data, files, photos, maps, etc.)
- Easily Prepare/Print Annual Report

### MS4 Permit Manager™ Features:

- SWMP development with measurable goals, implementation schedules, and proposed budgets
- Track/Inventory Outfalls/Inspections
- Track Illicit Discharges
- Track Construction Sites
- Track Post-Construction Sites
- Track Municipal/Industrial/ Commercial Facilities
- Track Citizen Reports
- Track Training Records
- Built-In GIS Map functionality
- Unlimited photo and file linkage
- Reporting/Automatic generation of Annual Reports

### Webinars Available!

Schedule a one-hour webinar for you to view the software at the comfort of your desk. You can also hold one in a meeting room.

### CBI Systems Ltd. Products

CBI has a desktop software version and a web-based software product:

- **MS4 Permit Manager™ (Desktop)**
- **MS4 Web™ (Web-based version)**

### MS4 Web™ - Web-based Features:

- Real time inspection recordkeeping
- Web-access field computers – Tablet PCs and Tuff Book style computers
- 3<sup>rd</sup> Party Data Entry (i.e., Consultants, Construction Contractors)
- Enhanced Security Settings
- Unlimited Photos/File linkage
- ESRI ArcGIS Mapping software included; GIS Data Import available.

### MS4 SWMP Setup Services Available:

- Enter SWMP
- Enter BMPs
- Enter Implementation Tasks and Goals
- Import Existing map files (including outfalls, construction sites, inspection data, post construction sites, etc.)
- Stormwater Permit Consulting services
- Built-in GIS Map functionality and map printing

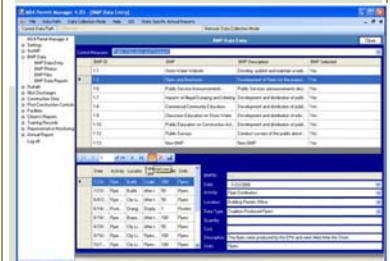


Your Geosource Distributor

AND



MS4 Software is integrated with GIS



BMP Data Entry Screen of Activity Records

### *The Logo Corner:*

*Here is just a few of the Manufacturers we know and trust:*



Storm Water Permit Software  
By Stormwater Permit Specialists

[Click Here to Get a Free Online Demo...](#)



Request to be notified of the next round of webinars. In one hour, you can learn all the value this software can bring to your organization. It is free to watch and listen and will ultimately save you a great deal of time and money. Email [dthieman@aspent.com](mailto:dthieman@aspent.com) to request information on the next series of webinars.

### **Special Notice for Quick Supply Customers**

Quick Supply will be hosting a morning seminar on January 26th at the Hilton Garden Inn, Johnston, IA on the following topics:

- **Tencate Mirafi** and the RSi Series Woven Geotextile Solutions for subgrade improvement
  - **PaveDrain** Permeable Articulating Concrete Block Mat Paving Surface for creating permeable solutions
- Contact Steve at [skrehbiel@quicksupplydm.com](mailto:skrehbiel@quicksupplydm.com) for more info.