

Case Study



Vol. # 4.03

Geoweb Channel Lining

**Concrete Filled Geoweb
Tesson Creek Subdivision,
St. Louis, MO**



This Geoweb project was installed around 1991. There are very few cracks in the concrete and the weep holes still appear to be functioning.

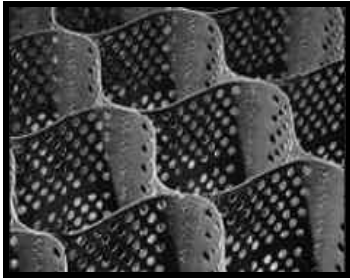
Geoweb will:

- Work as a concrete form to speed placement of the concrete
- Insure that the minimum design thickness of concrete is installed
- Reinforce the concrete
- Be a flexible form around angle points and bends
- Work with anchoring systems to hold the concrete on steep slopes



Visit us at www.aspent.com

Geoweb Channel Lining



**Chaffee Ditch Project
Chaffee, MO
During & After
Construction**



City of Farmington, MO

Corporate Office:

275 Northwest Blvd.
Fenton, Mo 63026
(636)343-4357
(800)869-9600
(636)343-4723-fax

Regional Offices:

109 N.W. Victoria Drive
Lee's Summit, MO 64086
(816)554-1191
(800)519-2304
(816)554-2262-fax

9840 S. 140th St. Suite 5 & 6
Omaha, NE 68138
(402)861-8579
(877)678-8027
(402)861-8592-fax