

D2 Coir Fiber Products

ASP ENTERPRISES AND QUICK SUPPLY CO.

The Geosource Product Specification

D2 LAND AND WATER RESOURCE

D2 COIR FIBER PRODUCTS



Difficult Jobs Made Easy...

D2 Vegetated Coir Log technology ensures that you will successfully install and establish native plants on any project site, regardless of project difficulty.



Maintenance Free...

D2 Vegetated Coir Logs require no maintenance or watering after installation.



Confidence...

D2 Vegetated Coir Logs allow a specifier to know with certainty that the system they designed will be provided; and an installer to know that their installation will be successful with no call backs.

All Year Round...

D2 Vegetated Coir Logs allow the use of soil bioengineering techniques with woody or herbaceous species in spring, summer, fall, and winter.

St. Louis-275 Northwest Blvd., Fenton, MO 63026

636-343-4357

Toll Free 800-869-9600

Des Moines-6620 NW Toni Ave., Des Moines, IA 50313

515-289-1271

Toll Free 800-362-2245

Kansas City-109 NW Victoria Dr., Lee's Summit, MO 64086

816-554-1191

Toll Free 800-519-2304

Omaha- 15263 Cooper St., Omaha, NE 68138

402-861-8579

Toll Free 877-678-8027

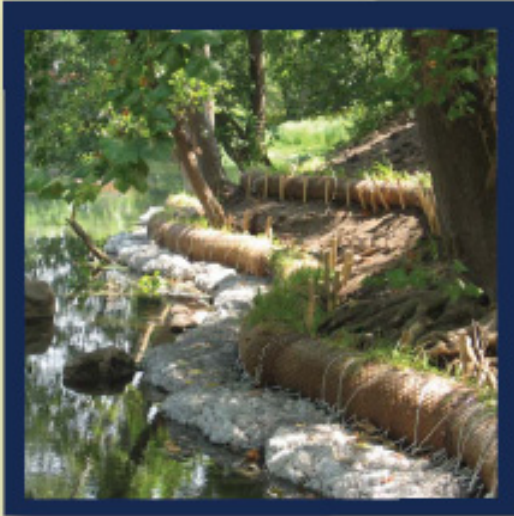


D2 Coir Fiber Products

ASP ENTERPRISES AND QUICK SUPPLY CO.

The Geosource Product Specification

D2 COIR FIBER PRODUCTS

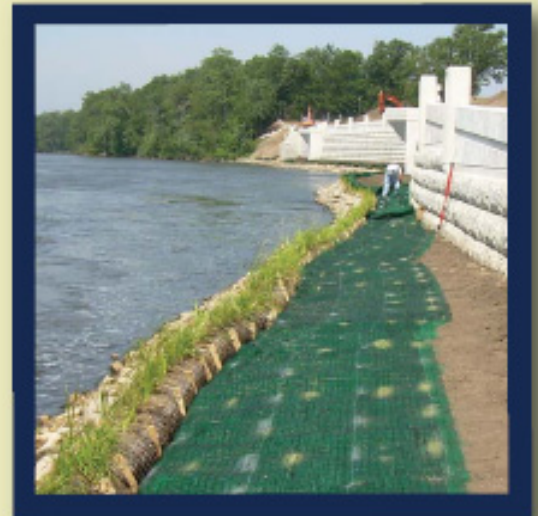


Where are D2 Coir Fiber Products Useful?

- Sediment Control and Dewatering Applications
- Slope, Lake, and Reservoir Shorelines
- Beaches, Dunes, Tidal, Estuary, and Surge Zone Areas
- Wetland and Riparian Areas, Waterways, Stream and River Banks, Woodlands
- 100% Biodegradable Options for Environmentally Sensitive Areas

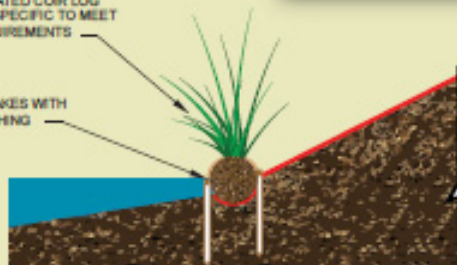
What Coir Products and Services are Available?

- Coir Logs, Coir Mats, Coir Gabions, Latex Coir, Coco Peat, Coir Sand Bags, and Nursery Products
- Auto Cad Details, Site Specific Recommendations and Budgets, USACE Certified Installers
- Multiple Exterior Net, Net Reinforcement, and Anchor System Options



D2 VEGETATED COIR LOG SPECIES SPECIFIC TO MEET SITE REQUIREMENTS

WOOD STAKES WITH ROPE LASHING



St. Louis-275 Northwest Blvd., Fenton, MO 63026

636-343-4357

Toll Free 800-869-9600

Des Moines-6620 NW Toni Ave., Des Moines, IA 50313

515-289-1271

Toll Free 800-362-2245

Kansas City-109 NW Victoria Dr., Lee's Summit, MO 64086

816-554-1191

Toll Free 800-519-2304

Omaha- 15263 Cooper St., Omaha, NE 68138

402-861-8579

Toll Free 877-678-8027