

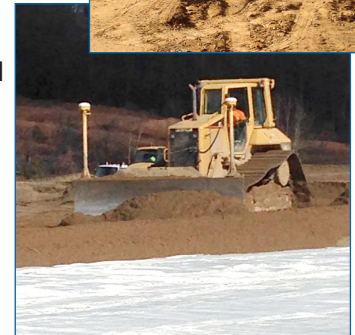
Project Profile

Project Name: InDOT PR69/Taylor Ridge to Plummer Creek
Owner: InDOT
Engineer: URS
Contractor: JV - Kolb Grading & Fred Weber Inc.
Subcontractor: DLH Trucking

Install Date: Fall, 2013 thru Spring, 2014
Products: TenCate's Mirafi PET 1000/117 Polyester Geotextile & Mirafi BX110 Biaxial Geogrid
Qty: 310,000 sy of PET 1000/117 & 200,000 sy of BX110

Project Scope: The TenCate Mirafi Geosynthetic products were used in the ground improvement plan for construction of (2) embankments that will support the east & west approaches to a 2600 lf bridge in the construction of 2.68 miles of new hwy. It is one of the many highway construction contracts to build Hwy 69 connecting Evansville, IN to Indianapolis, IN. Ground monitoring equipment will measure the settlement of the (2) embankments. They rise some 45' and 65' in elevation over marshy and boggy soils. Wick drains and the PET High Strength Geotextile in combination with the B-Borrow sand lifts will provide consolidation, reinforcement and uniform settlement of the embankments. It will be measured and after 135 days and 105 days respectively on the west and east bank, the bridge and roadway construction will commence. The east embankment is nearing completion, while work on the west side will commence in late February or early March, 2014. The Mirafi BX110G Biaxial Geogrid will be used for reinforcement of the shallow soil slope veneer on the embankment slope face(s).

Product description/benefits: The Mirafi PET 1000/117 is a very high strength geotextile, possibly the strongest in its class. The Polyester woven-knitted geotextile is superior to other geotextiles reaching higher UT – Ultimate Tensile Strengths compared to similar products. The polyester fibers provide excellent creep resistance that lead to higher LTDS – Long Term Design Strength, a must when building embankments over soft foundation soils. The Mirafi BXG110 Biaxial Geogrid is a polypropylene geogrid providing high tensile modulus, superior durability and combined with the grid structure, provides excellent soil interaction for secondary slope reinforcement applications.



Employee Profile



Meet Brad Bellis.

Brad Bellis has now been with Quick Supply Company for 16 years. He is a very proud graduate of Iowa State University, majoring in Landscape design. Brad resides in Urbandale Iowa with his wife and is father to three girls.

Brad is part of the outside sales force at Quick, where he calls on, and services a number of central Iowa Landscape contractors, along with solving your personal, home landscaping needs.

Come in to our DesMoines location and take a look at our wide range of natural stones, retaining walls and outdoor kitchens.

Event Calendar

**EC14-IECA
Erosion Connection 2014**
February 25 - 27, Nashville, TN
[Click Here >](#)

**ASP/Quick Supply 2014
Clean and Green Sustainability
Conference and Expo**
March 11th-Omaha
March 12th Des Moines
March 13th-KC, MO
March 14th St. Louis, MO
[Click Here >](#)

**Great Rivers Joint IECA
Great Connections 2014**
April 29-May 1
Great Rivers / Davenport, IA
[Click Here >](#)