

# Interurban Bridge Reinforced Slope Case Study



The Midwest's Most Trusted Site Solutions Provider

Project: Interurban Bridge & Trail Bank Stabilization

Location: NW Vivion Rd. & St. Joe Blvd.,  
Riverside, Missouri

Application/Solution: Gabion, Geoweb & "Burrito Wrapped" Reinforced Walls and Slopes

Market Sector: Municipal

Salesperson: John Warren

Owner: City of Riverside, MO

Engineer: HDR Engineering,  
Lee's Summit, MO

Contractor: Cobra Contractors,  
Overland Park, KS

Installed: Spring 2013

case study



case study

## Challenge

Repair and replace a busy fitness trail while protecting a historic bridge and a KCMO Sanitary Sewer Line. The area has highly erodible Loess laden soils and the channel handles intense urban runoff during storm events.



1 Pre construction photo showing the abutment erosion and the loss of the trail.

## Solutions

A combination of 3 reinforced wall systems, Gabions, a Geoweb Cellular Confinement System and a Geogrid reinforced coir mat "burrito wall" with live stake plantings.



2 Geoweb wall construction on top of the Gabion Base.

## Results

The contractor was able to change the access point into the project which sped up the process and allowed a greatly reduced trail closure time. The biggest issue was that they could not find the rock bottom to the creek that was supposed to be there. Additional gabions took care of that issue and the Geoweb wall went up quickly. The "burrito wall" was also quickly completed in time to install the live stakes and benefit from the Spring rains.



3 Geoweb wall supporting track hoe during infill.



# Interurban Bridge Reinforced Slope Case Study continued



## Products

Manufacturers included in solutions and product:

Product: PVC Coated Gabions  
 Manufacturer: Terra Aqua Gabions

Product: Geoweb Cellular Confinement system  
 Manufacturer: Presto Products

Product: Miragrid 3XT & 5XT, 160N Geotextile  
 Manufacturer: Mirafi

Product: Woven Coir Fiber Matting  
 Manufacturer: Western Excelsior



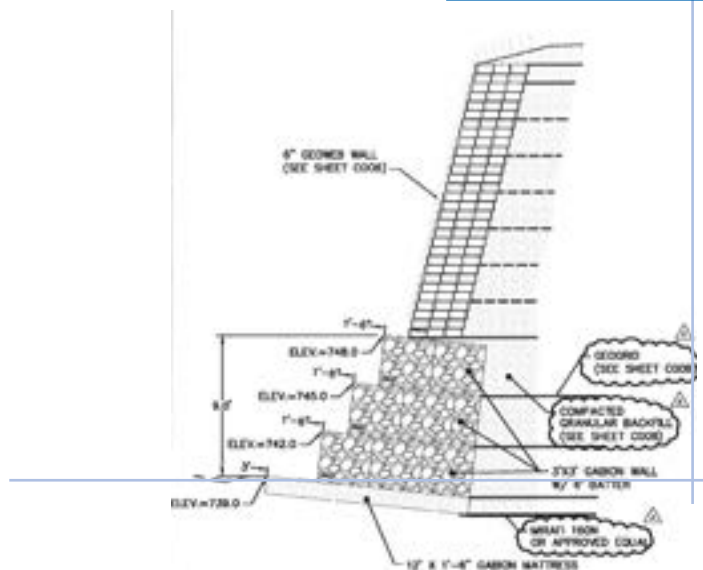
4 "Burrito Wall" during construction.



5 Completed project before vegetation growth.



6 Completed Wall before Spring.



Cross Section showing Fascia and Gabions.

## Company Information

ASP Enterprises, Inc. and Quick Supply Co. For more than three decades, A.S.P. Enterprises and Quick Supply Co. has served the erosion control industry with integrity and expertise. We provide engineers and landscape contractors the exceptional value for their money and have grown to become the Midwest's full-line distributor of erosion-control, geosynthetics, storm water management products, wall block, landscape pavers, and drainage products.

ASP Enterprises, Inc.  
 Corporate Headquarters  
 www.aspent.com  
 info@aspent.com

St. Louis, MO  
 636.343.4357  
 800.869.9600

Quick Supply Co.  
 Corporate Headquarters  
 www.quicksupplydm.com  
 info@quicksupplydm.com

Des Moines, IA  
 515.289.1271  
 800.362.2245

Kansas City, MO  
 816.554.1191  
 800.519.2304

Omaha, NE  
 402.8618579  
 877.678.8027

Wichita, KS  
 316.393.1554