

# Flex-a-mat®

**ASIP**  
ENTERPRISES

Standard Roll – 16' x 50'



USACE Project Installation



ONE DAY INSTALLED!

PHASE 1



TWO MONTHS INSTALLED

PHASE 2



## Stops Erosion

### No more rock rip rap No more poured concrete gutters

**Wlimit FLEXAMAT(std) = 24+ psf Vlimit FLEXAMAT(std) = 19+ ft/sec**

Flex-a-mat, a tied concrete block mat, is used to control erosion in swales, ditches, slopes, shoreline protection, or any area where soil sediment can be moved by water runoff.

Flex-a-mat consists of concrete shapes, rectangular or round, that are tied together with high strength geogrid. This product results in the geogrid and the concrete becoming a high strength flexible hard armor against erosion. Flex-a-mat enables vegetation to become established while remaining a permanent armor against future erosion. Eventually, vegetation will cover the entire mat as seen in the bottom left picture.

Flex-a-mat comes in rolls and is available in widths of 5.5', 8', 10', & 16'. These rolls are available in various lengths. The roll design makes installation very efficient.

#### BENEFITS FOR DITCH APPLICATIONS:

- *Easy and Efficient Installation*
- *Multiple uses: erosion prevention, roadside, drainage, landfills, and more*
- *Produced onsite, reducing costs—typically cheaper than rock*
- *Environmentally friendly—allows vegetation growth*
- *Capable of handling high flow water runoff*  
(Ask about The Louisiana installation that survived Hurricane Rita!)
- *Easy maintenance, mow right over Flex-a-mat®!*
- *Cleanses the water of sediments and water runs clear*

Find out why Flex-a-mat® is the solution for erosion problems. Please visit our website for more information on how we've helped others eliminate erosion and save cost on maintenance.

Request **Flex-a-mat®**  
when your next job calls for rocks.

Contact us today!

513-772-6689  
www.Flexamat.com

**Flexamat**



## ADDITIONAL INFORMATION

Flex-a-mat is simple and easy to install. Contractors who have access to a track-hoes can install Flex-a-mat in a matter of minutes.

The area should be graded so that the Flex-a-mat has direct contact with the subgrade. It should also be seeded prior to the Flexamat installation. A smooth bucket on the excavator is used to unroll the mat into place.

A manufacturer representative is always available to answer any question(s) a contractor might have.

### ROLLS OF FLEX-A-MAT



### ROADSIDE BEFORE



### ROADSIDE AFTER



### COLUMBUS ZOO - Rt. 750 BEFORE



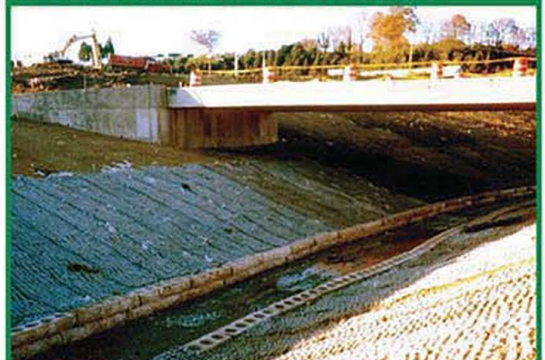
### COLUMBUS ZOO - Rt. 750 AFTER



### COLUMBUS ZOO - Rt. 750 AFTER



### STEEP HILLSIDE BEFORE



### STEEP HILLSIDE AFTER



**ASIP**  
ENTERPRISES  
Quick Supply Co.  
The Midwest's Most Trusted  
Site Solutions Provider

Distributed by:

[www.aspent.com](http://www.aspent.com)

[www.quicksupplydm.com](http://www.quicksupplydm.com)