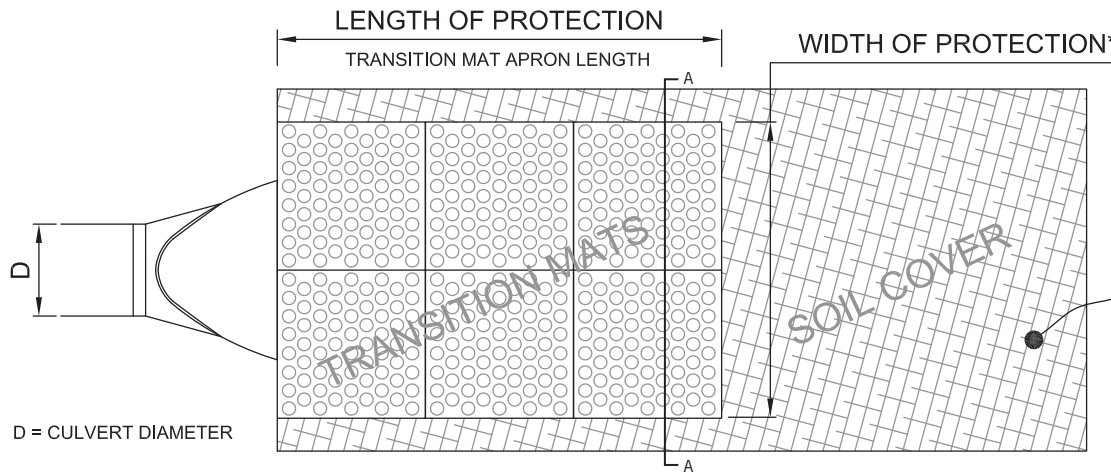




# ScourStop® Installation Recommendations



1. ScourStop mats must be installed over a soil cover: sod, seeded turf reinforcement mat (TRM), geotextile, or a combination thereof.
2. For steep slopes (>10%) or higher velocities (>10 ft/sec), sod is the recommended soil cover.
3. Follow manufacturer's **ScourStop Installation Guidelines** to ensure proper installation.
4. Install ScourStop mats at maximum 1-2" below flowline of culvert or culvert apron. (No waterfall impacts onto ScourStop mats.)
5. Performance of protected area assumes stable downstream conditions.



Transition mat apron protects culvert outlet.

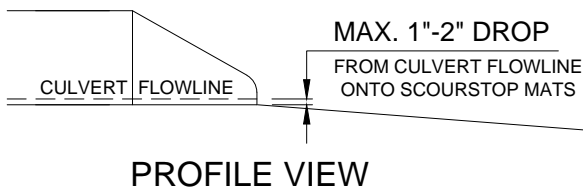
\*Width of protection:

Bottom width of channel and up both side slopes to a depth at least half the culvert diameter.

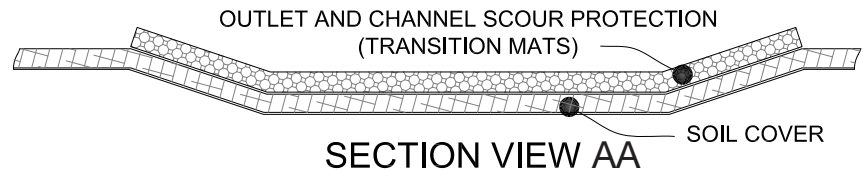
Protect bare/disturbed downstream soils from erosion with appropriate soil cover.

Use normal-depth calculator to compute for downstream protection.

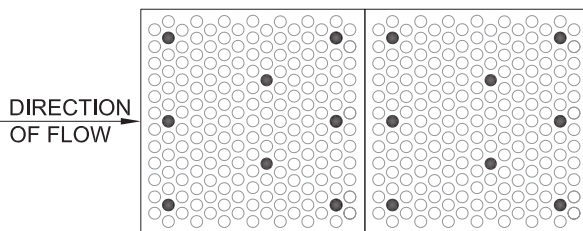
CULVERT OUTLET PROTECTION – PLAN VIEW



PROFILE VIEW

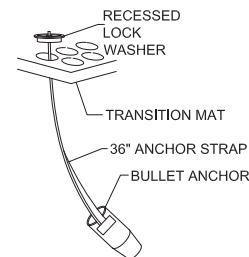


SECTION VIEW AA



## ANCHOR PATTERN

- Abut transition mats to end of culvert or culvert apron.
- Adjacent mats abut together laterally and longitudinally.
- Minimum 8 anchors per mat.
- Extra anchors as needed for loose or wet soils.
- Extra anchors as needed for uneven soil surface.



## ANCHOR ILLUSTRATION

- Install anchors per **ScourStop Installation Guidelines**.
- Minimum depth 24" in compacted, cohesive soil.
- Minimum depth 30" in loose, sandy, or wet soil.
- Extra anchors as needed to secure mat tightly over soil cover.



A LEADER in the GEOSYNTHETIC and EROSION CONTROL industries  
Learn more about our products at: [HanesGeo.com](http://HanesGeo.com) | 888.239.4539

