



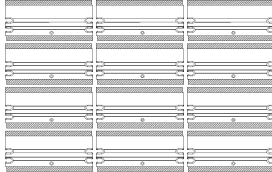
Stonedge
COLLECTION

NEW

Travertina Raw

DESCRIPTION: Double-sided wall **TEXTURE:** Travertine

PALLET OVERVIEW



COMPATIBLE CAPS

See page 101 for product compatibility.

NOTES

The dimensional tolerance for Stonedge wet cast retaining wall units is: $\pm 3/16"$ (5 mm) for height and $\pm 1/2"$ (13 mm) for length and width. During the installation, the level between adjacent wall units will vary (usually more than for a dry cast wall unit) in order to obtain a more realistic appearance of a natural stone wall.

See page 97 to 118 for more technical information.

Specifications per pallet	Imperial	Metric
Cubing	31.75 ft² /pal	2.95 m ² /pal
	63.5 lin. ft /pal	19.36 lin. m /pal
Weight	2 850 lbs	1 292 kg
Number of rows	4	
Coverage per units	0.66 ft ² /unit	0.06 m ² /unit
Coverage per row	7.94 ft ² /row	0.74 m ² /row
Linear coverage per row	15.88 lin. ft/row	4.84 lin. m/row

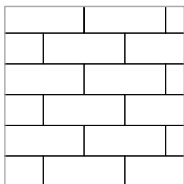


A

Unit dimensions	in	mm	Units/pallet
Height	6	152	48 units
Depth	7 ¹⁵ / ₁₆	202	
Length	15 ⁷ / ₈	403	



01 | Linear pattern



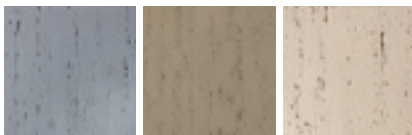
Patterns are for design inspiration only. The installer is responsible to calculate & purchase the correct amount of material.

Visit our website for more patterns.

riviera

rock garden brown

ivory



Distributed by:

ASIP
ENTERPRISES

www.aspent.com

(800) 869-9600



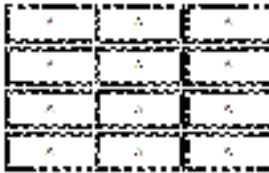
Stonedge
COLLECTION

NEW

Travertina Raw

DESCRIPTION: Corners and pillars **TEXTURE:** Travertine

PALLET OVERVIEW



COMPATIBLE CAPS

See page 101 for product compatibility.

NOTES

The dimensional tolerance for Stonedge wet cast retaining wall units is: $\pm 3/16"$ (5 mm) for height and $\pm 1/2"$ (13 mm) for length and width. During the installation, the level between adjacent wall units will vary (usually more than for a dry cast wall unit) in order to obtain a more realistic appearance of a natural stone wall.

See page 97 to 118 for more technical information.

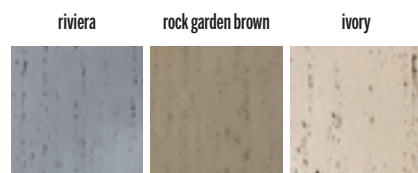
Specifications per pallet	Imperial	Metric
Cubing	24 units	24 units
Weight	1 535 lbs	696 kg
Number of rows	2	
Pillar height	36"	914 mm



A



Unit dimensions	in	mm	Units/pallet
Height	6	152	24 units
Depth	7 ¹⁵ / ₁₆	202	
Length	15 ⁷ / ₈	403	



■ ■ ■ TONE DISTRIBUTION
■ ■ ■ HIGH